

TUSCAN BLEND MODULAR 50MM THICK



**PRODUCT RANGE
CLASSIFICATION**

**CLAY PAVING BRICK
PA-PAVING CLASS A**

Units that are selected or produced for their durability and for a high degree of uniformity in size and shape.

SABS

Following The South African National Standard (SANS 1575:2007) for burnt clay paving units.



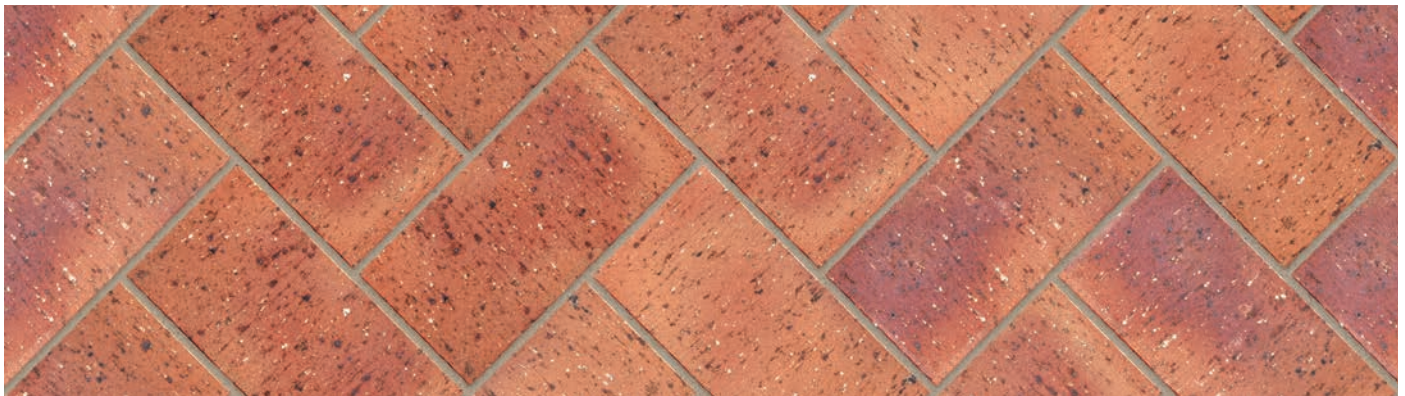
Variations in colour, texture, and size are natural characteristics of clay products and production variations can occur from batch to batch. Whilst every effort is made to provide brochures consistent with products delivered to site, they should be viewed as a guide only.

TUSCAN BLEND MODULAR 50MM THICK



SPECIFICATIONS

Size (length x width x thickness)	220 x 108.5 x 50mm	Average Mass Per Paver	2.6kg
Nibbed	<input checked="" type="checkbox"/> If ticked, yes	Pavers Per Pallet	500
Chamfered	<input checked="" type="checkbox"/> If ticked, yes	Typical 24 Hour Water Absorption	>5%
Factory Manufactured At	Springs, Gauteng	Exposure Zone Suitability	1-3
Pavers per m² (Excl cutting & waste)	41	Traffic	Light Traffic
SANS	1575:2007	Dish Drain Channel	<input checked="" type="checkbox"/> If ticked, yes
ISO	9001:2015	Kerb End	<input checked="" type="checkbox"/> If ticked, yes
Average Compressive Strength	>61MPa	Bullnose on Flat	<input checked="" type="checkbox"/> If ticked, yes
Average Modulus of Rupture	>5MPa		



www.corobrik.co.za



Download the high-resolution swatches, BIM files and view more project photos | www.corobrik.co.za

Variations in colour, texture, and size are natural characteristics of clay products and production variations can occur from batch to batch. Whilst every effort is made to provide brochures consistent with products delivered to site, they should be viewed as a guide only.