

TUSCAN BLEND MODULAR 65MM THICK



PRODUCT RANGE
CLASSIFICATION

CLAY PAVING BRICK
PA-PAVING CLASS A

Units that are selected or produced for their durability and for a high degree of uniformity in size and shape.



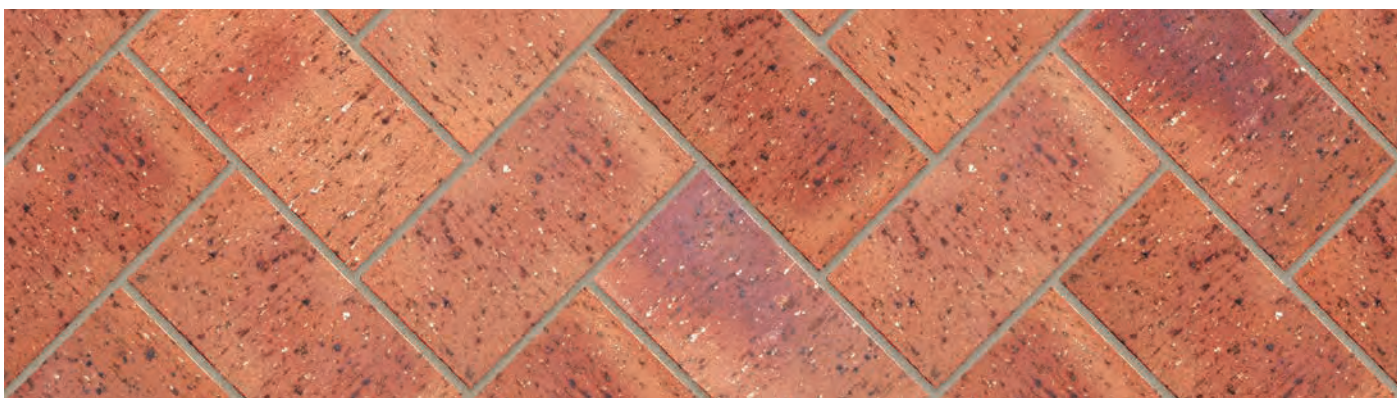
Variations in colour, texture, and size are natural characteristics of clay products and production variations can occur from batch to batch. Whilst every effort is made to provide brochures consistent with products delivered to site, they should be viewed as a guide only.

TUSCAN BLEND MODULAR 65MM THICK



SPECIFICATIONS

Size (length x width x thickness)	200 x 98.5 x 65mm	Average Mass Per Paver	2.8kg
Nibbed	<input checked="" type="checkbox"/> If ticked, yes	Pavers Per Pallet	500
Chamfered	<input checked="" type="checkbox"/> If ticked, yes	Typical 24 Hour Water Absorption	>6%
Factory Manufactured At	Springs, Gauteng	Exposure Zone Suitability	1-3
Pavers per m² (Excl cutting & waste)	48	Traffic	Medium Traffic
SANS	-	Dish Drain Channel	<input checked="" type="checkbox"/> If ticked, yes
ISO	9001:2015	Kerb End	<input checked="" type="checkbox"/> If ticked, yes
Average Compressive Strength	>41MPa	Bullnose on Flat	<input checked="" type="checkbox"/> If ticked, yes
Average Modulus of Rupture	>3MPa		



www.corobrik.co.za



Download the high-resolution swatches, BIM files and view more project photos | www.corobrik.co.za

Variations in colour, texture, and size are natural characteristics of clay products and production variations can occur from batch to batch. Whilst every effort is made to provide brochures consistent with products delivered to site, they should be viewed as a guide only.