

# COUNTRY CLASSIC SATIN FBS



## PRODUCT RANGE CLASSIFICATION

## CLAY FACE BRICK FBS - FACE BRICK STANDARD

Clay bricks that are selected or produced for their durability and uniformity of size and shape.



Following The South African National Standard (SANS 227:2007) for burnt clay face bricks.



### BRICK TEXTURE SATIN

A smooth, non-grainy face finish or slightly grainy face finish.



Variations in colour, texture, and size are natural characteristics of clay products and production variations can occur from batch to batch. Whilst every effort is made to provide brochures consistent with products delivered to site, they should be viewed as a guide only.

# COUNTRY CLASSIC SATIN FBS

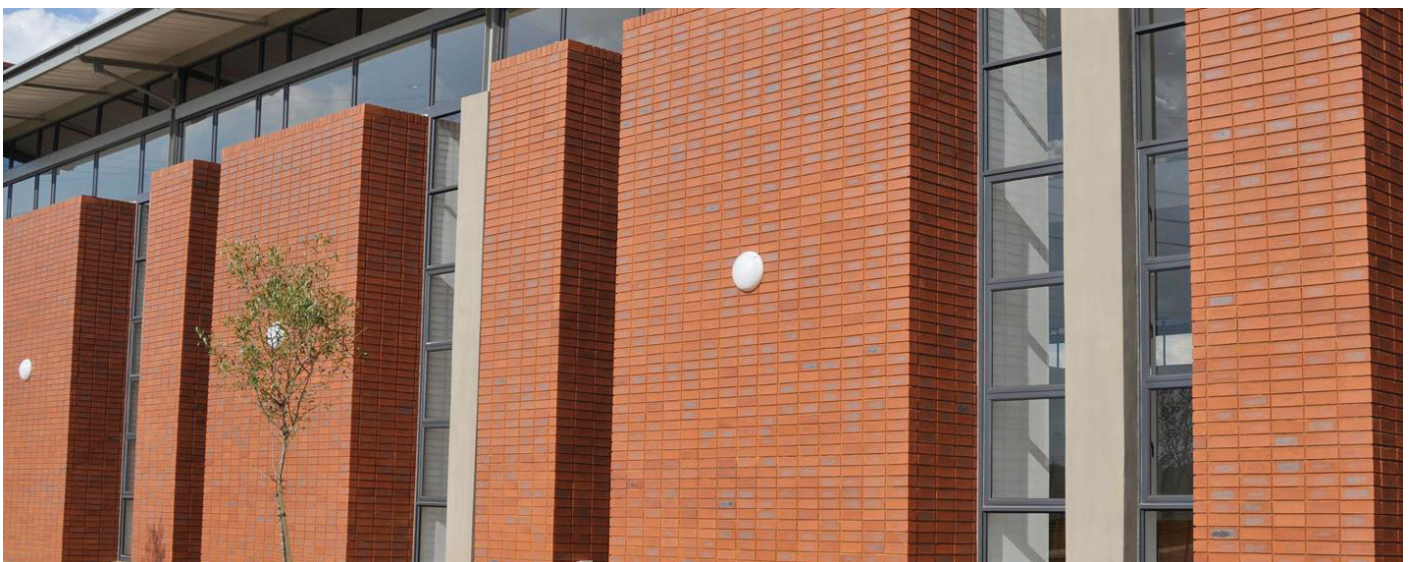


## SPECIFICATIONS

<b>Size</b> (length x width x height)	222 x 106 x 73mm	<b>Classification</b>	FBS
<b>SANS</b>	227:2007	<b>ISO</b>	9001:2015
<b>Typical Compressive Strength</b>	>24MPa	<b>Typical 24<sup>hr</sup> Water Absorbtion</b>	>6%
<b>Moisture Expansion Category</b>	I	<b>Efflorescence Rating</b>	Slight-Moderate
<b>Exposure Zone Suitability</b>	1 - 2	<b>Bricks per m<sup>2</sup></b> (excluding cutting & waste)	51
<b>Factory Manufactured At</b>	Rietvlei, Gauteng	<b>Bricks per pallet</b>	464
<b>Average mass per brick</b>	2.3kg	<b>Available in Special Shaped Bricks</b>	Yes



View the range of Special Shaped Bricks | [www.corobrik.co.za](http://www.corobrik.co.za)



Eden Park Cemetry

Download the high-resolution swatches, BIM files and view more project photos | [www.corobrik.co.za](http://www.corobrik.co.za)

Variations in colour, texture, and size are natural characteristics of clay products and production variations can occur from batch to batch. Whilst every effort is made to provide brochures consistent with products delivered to site, they should be viewed as a guide only.