

# TUSCAN BLEND MODULAR 65MM THICK



**PRODUCT RANGE  
CLASSIFICATION**

**CLAY PAVING BRICK  
PA-PAVING CLASS A**

Units that are selected or produced for their durability and for a high degree of uniformity in size and shape.



Variations in colour, texture, and size are natural characteristics of clay products and production variations can occur from batch to batch. Whilst every effort is made to provide brochures consistent with products delivered to site, they should be viewed as a guide only.

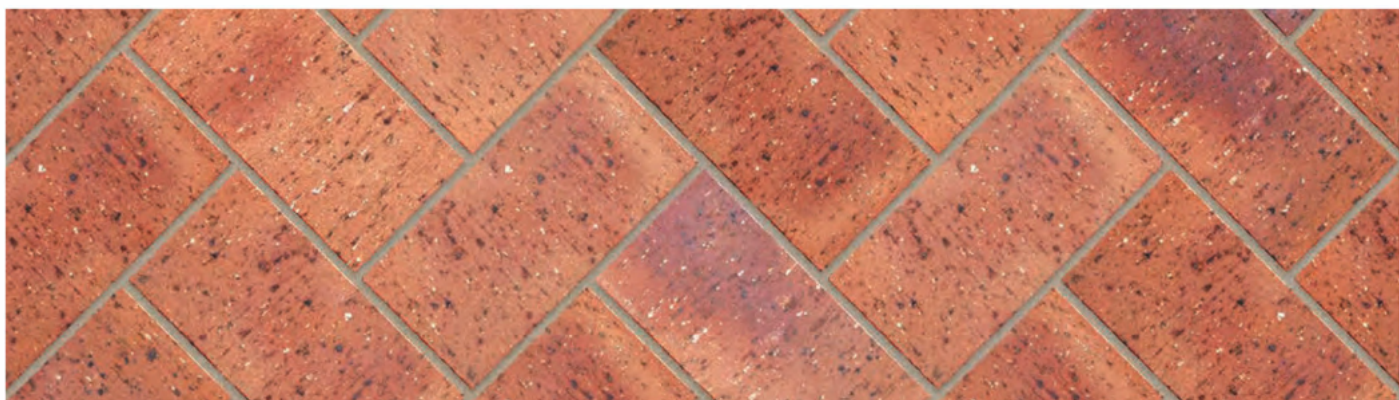


# TUSCAN BLEND MODULAR 65MM THICK

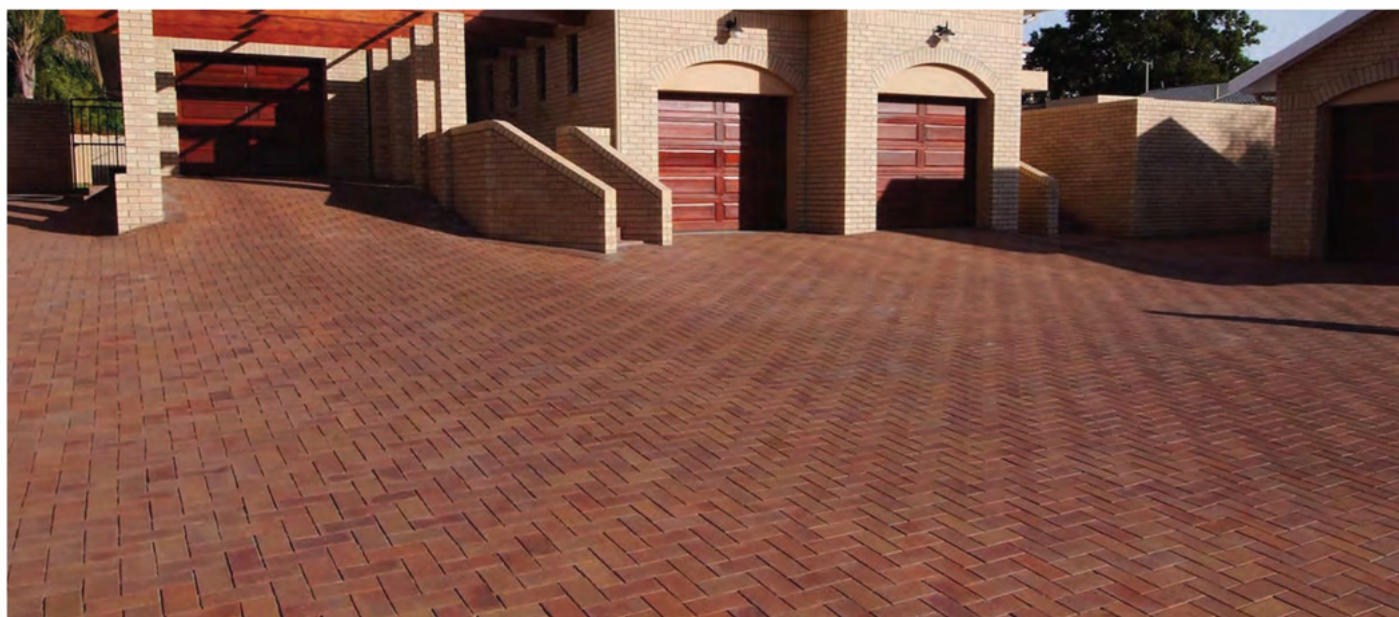


## SPECIFICATIONS

<b>Size</b> (length x width x thickness)	200 x 98.5 x 65mm	<b>Average Mass Per Paver</b>	2.8kg
<b>Nibbed</b>	<input checked="" type="checkbox"/> If ticked, yes	<b>Pavers Per Pallet</b>	500
<b>Chamfered</b>	<input checked="" type="checkbox"/> If ticked, yes	<b>Typical 24 Hour Water Absorption</b>	>6%
<b>Factory Manufactured At</b>	Springs, Gauteng	<b>Exposure Zone Suitability</b>	1-3
<b>Pavers per m<sup>2</sup></b> (Excl cutting & waste)	48	<b>Traffic</b>	Medium Traffic
<b>SANS</b>	-	<b>Dish Drain Channel</b>	<input checked="" type="checkbox"/> If ticked, yes
<b>ISO</b>	9001:2015	<b>Kerb End</b>	<input checked="" type="checkbox"/> If ticked, yes
<b>Average Compressive Strength</b>	>41MPa	<b>Bullnose on Flat</b>	<input checked="" type="checkbox"/> If ticked, yes
<b>Average Modulus of Rupture</b>	>3MPa	<b>Moisture Expansion Category</b>	Category I



[www.corobrik.co.za](http://www.corobrik.co.za)



Download the high-resolution swatches, BIM files and view more project photos | [www.corobrik.co.za](http://www.corobrik.co.za)

Variations in colour, texture, and size are natural characteristics of clay products and production variations can occur from batch to batch. Whilst every effort is made to provide brochures consistent with products delivered to site, they should be viewed as a guide only.