

TOPAZ SATIN FBX



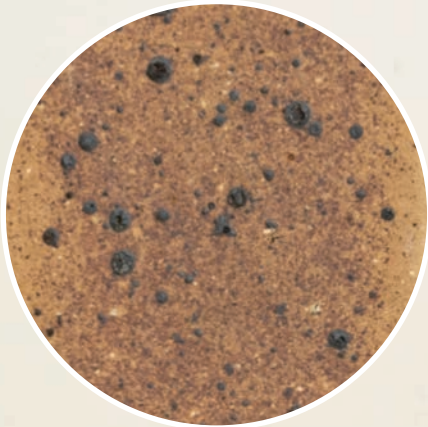
**PRODUCT RANGE
CLASSIFICATION**

**CLAY FACE BRICK
FBX - FACE BRICK EXTRA**

Durable face bricks possessing a high degree of size, shape and colour uniformity.

SABS

Following The South African National Standard (SANS 227:2007) for burnt clay face bricks.



**BRICK TEXTURE
TOPAZ SATIN**

A smooth, non-grainy face finish or slightly grainy face finish.



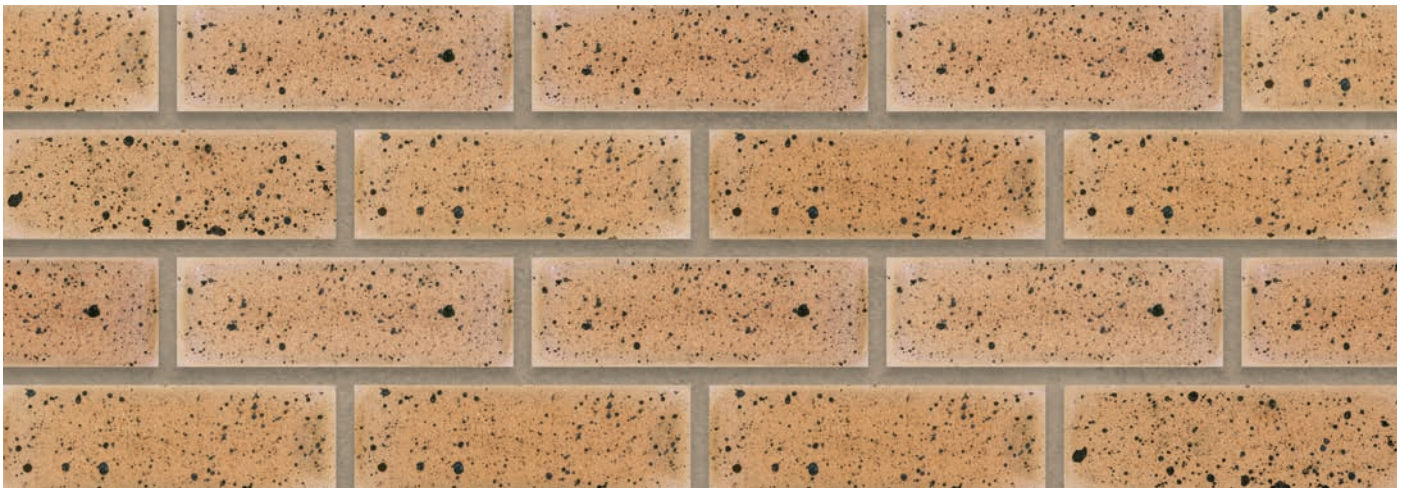
Variations in colour, texture, and size are natural characteristics of clay products and production variations can occur from batch to batch. Whilst every effort is made to provide brochures consistent with products delivered to site, they should be viewed as a guide only.

TOPAZ SATIN FBX



SPECIFICATIONS

Size (width x length x height)	222 x 106 x 73mm	Classification	FBX
SANS	227:2007	ISO	9001:2015
Typical Compressive Strength	>26MPa	Typical 24^{hr} Water Absorbtion	>8%
Moisture Expansion Category	I	Efflorescence Rating	Nil
Exposure Zone Suitability	1 - 4	Bricks per m² (excluding cutting & waste)	51
Factory Manufactured At	Midrand, Gauteng	Bricks per pallet	480
Average mass per brick	2.3kg	Available in Special Shaped Bricks	Yes



View the range of Special Shaped Bricks | www.corobrik.co.za



Curro Northriding College High School | Architect – BPAS Architect | Photo credit – 3sixty Photography

Download the high-resolution swatches, BIM files and view more project photos | www.corobrik.co.za

Variations in colour, texture, and size are natural characteristics of clay products and production variations can occur from batch to batch. Whilst every effort is made to provide brochures consistent with products delivered to site, they should be viewed as a guide only.