

ROAN SATIN FBX



PRODUCT RANGE CLASSIFICATION

CLAY FACE BRICK FBX - FACE BRICK EXTRA

Durable face bricks possessing a high degree of size, shape and colour uniformity.



Following The South African National Standard (SANS 227:2007) for burnt clay face bricks.



BRICK TEXTURE - SATIN

A smooth, non-grainy face finish or slightly grainy face finish.



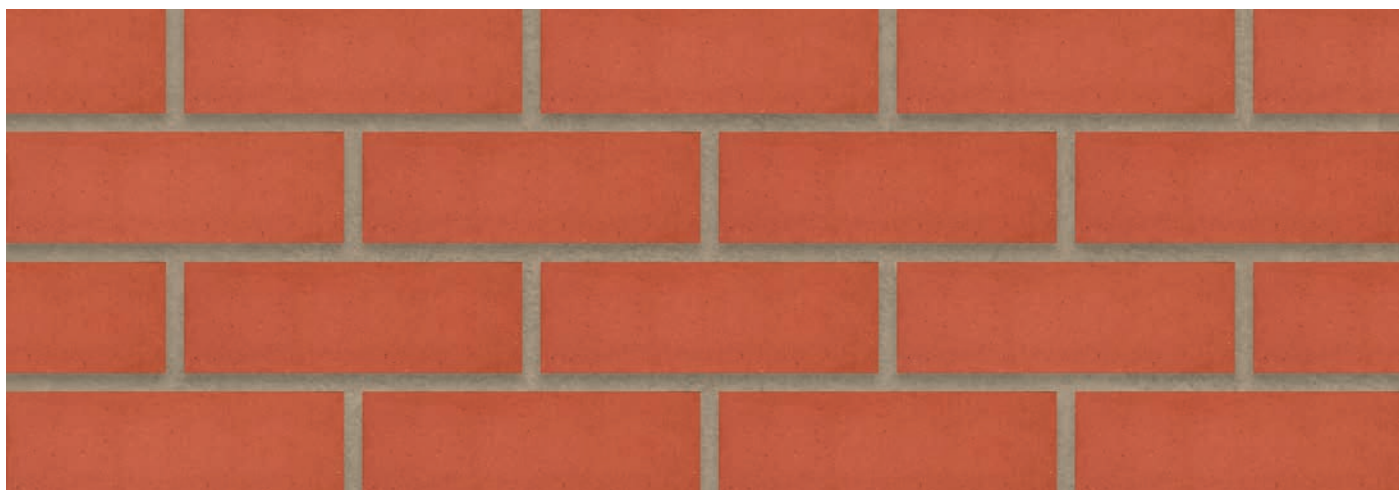
Variations in colour, texture, and size are natural characteristics of clay products and production variations can occur from batch to batch. Whilst every effort is made to provide brochures consistent with products delivered to site, they should be viewed as a guide only.

ROAN SATIN FBX

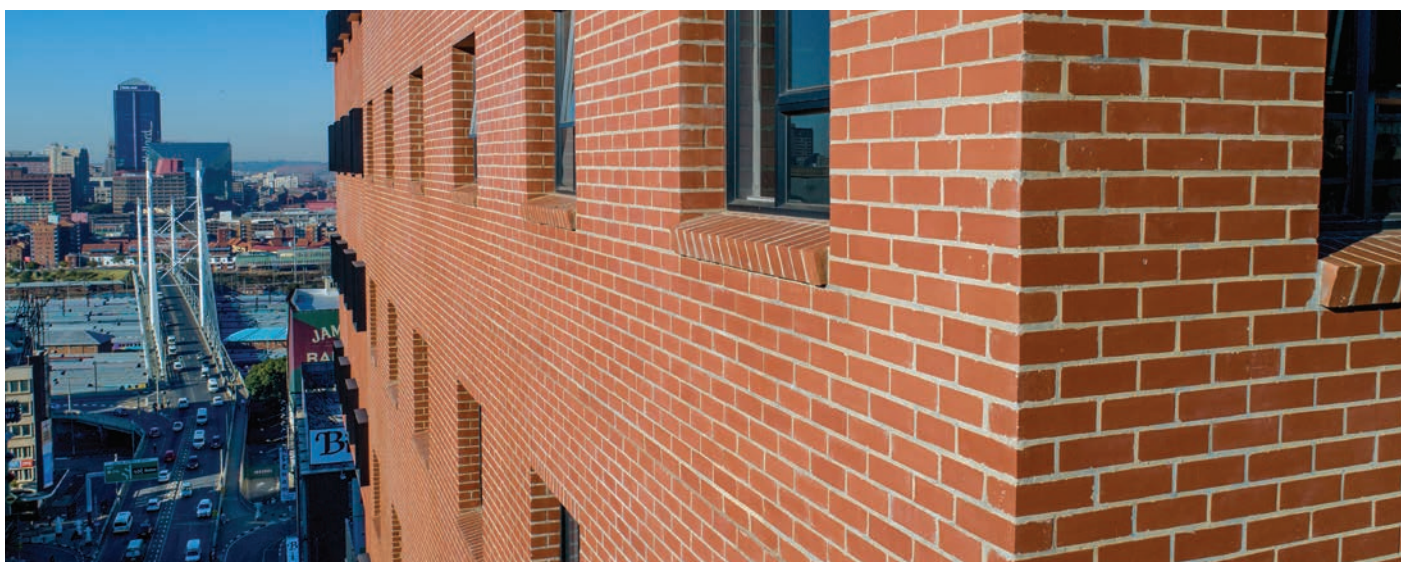


SPECIFICATIONS

Size (length x width x height)	222 x 106 x 73mm	Classification	FBX
SANS	227:2007	ISO	9001:2015
Typical Compressive Strength	>24MPa	Typical 24^{hr} Water Absorbtion	>8%
Moisture Expansion Category	II	Efflorescence Rating	Nil
Exposure Zone Suitability	1 - 3	Bricks per m² (excluding cutting & waste)	51
Factory Manufactured At	Midrand, Gauteng	Bricks per pallet	480
Average mass per brick	2.4kg	Available in Special Shaped Bricks	Yes



View the range of Special Shaped Bricks | www.corobrik.co.za



South Point Student Accommodation in Braamfontein | Architect - LYT Architecture

Download the high-resolution swatches, BIM files and view more project photos | www.corobrik.co.za

Variations in colour, texture, and size are natural characteristics of clay products and production variations can occur from batch to batch. Whilst every effort is made to provide brochures consistent with products delivered to site, they should be viewed as a guide only.